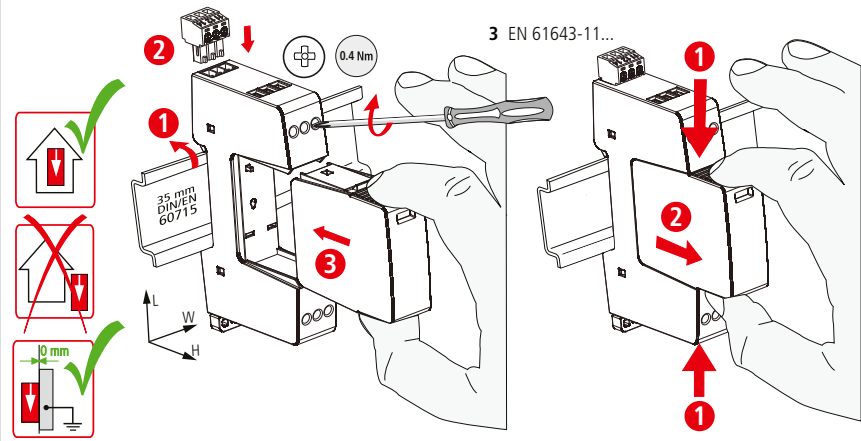


CE INSTALLATION INSTRUCTIONS

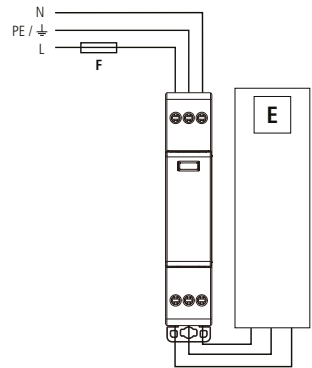
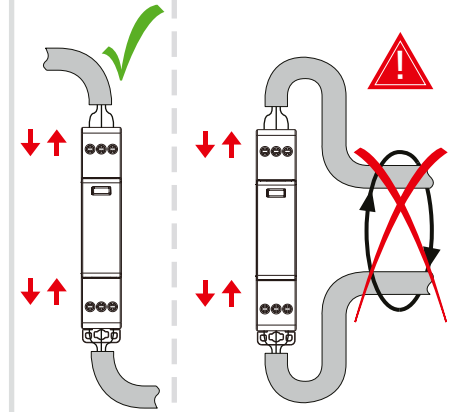


LSP T3 SPD TLP-XXX/2(S) Series

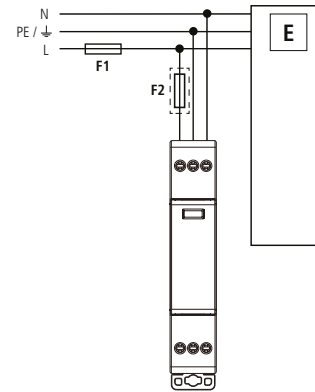
- DE Einbauanleitung
- GB Installation instructions
- IT Istruzioni di montaggio
- FR Instructions de montage
- NL Montagehandleiding
- ES Instrucciones de montaje
- PT Instruções de montagem
- DK Monteringsvejledning
- SE Monteringsanvisning
- FI Asennusohje
- GR Οδηγίες συναρμολόγησης
- PL Instrukcja montażu
- CZ Návod k montáži
- TR Montaj kılavuzu
- RU Инструкция по монтажу
- CN 安装说明
- HU Szerelési útmutató
- JP 設置説明書



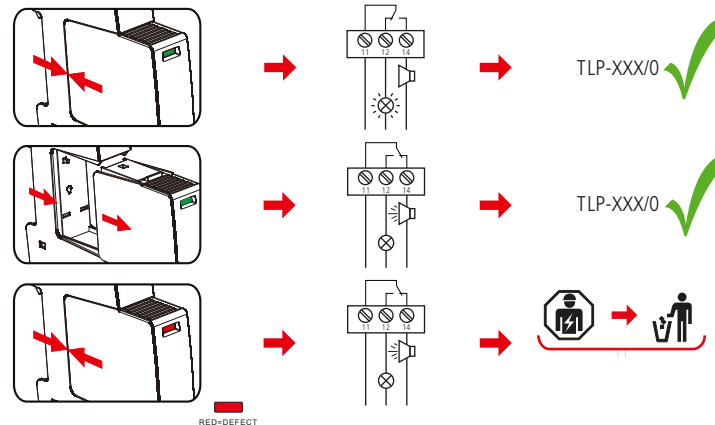
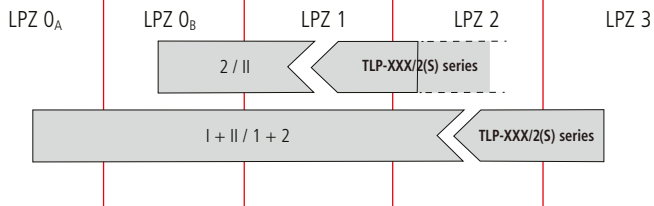
TLP-XXX/2(S) series	30	60	75	150	255
U_N (50/60 Hz); / Tol.: $\pm 10\%$	24 V	48 V	60 V	120 V	230 V
U_c AC	30 V	60 V	75 V	150 V	255 V
U_c DC	30 V	60 V	75 V	150 V	255 V
I_{SCCR}	6 kA _{ms} (1 kA _{ms})				
max. I_{SCCR}	25 A gG (B 25 A)				
θ	-40 °C ... +80 °C				
φ	5% ... 95%				
I_{PE}	< 5 μ A				
IP 1)	20				
L x W x H	90 mm x 18 mm x 64 mm				
	10 mm		10 mm		
min. \square 1, 2, 3, 4, \downarrow	0.5 mm ²				
max. \square 1, 2, 3, 4, \downarrow	2.5 mm ²		4 mm ²		



TLP-XXX/2(S) series	
F	$F \leq 25$ A gG ↓ ✓
	$F > 25$ A gG ↓ 3)



TLP-XXX/2(S) series	
F1	$F1 > 25$ A gG ↓ $F2 \leq 25$ A gG
F2	$F1 \leq 25$ A gG ↓ F2



TLP-XXX/2(S) series Remote Signalling Contact	
U_N / I_N	AC: 250 V / 0.5 A
	DC: 250 V / 0.1 A
	125 V / 0.2 A
	75 V / 0.5 A
	max. 1.5 mm ²

